

intertecnic

SHIP AND HYDROFOIL DESIGN

Our Company was established in 1974.

Since his foundation has prevalently operated in ship planning fields. In our 40 years of activity, we have collaborated with all the main Italian shipyards for various ship typologies, as below indicated:

- FINCANTIERI - Cantieri Navali Italiani S.p.A. – Monfalcone – Marghera – Ancona – Sestri – Castellammare (passenger ships, tankers, gas tankers, ferries)
- Nuovi Cantieri Apuania S.p.A. - La Spezia - (ferries, gas tankers, chemical tankers)
- C.N.F. - Cantiere Navale Ferrari S.p.A. - La Spezia - (Ferries, chemical tankers, tugboats)
- I.N.M.A. - La Spezia - (chemical tankers)
- Cantieri Navali U. Codecasa - Viareggio - (yachts)
- Perini Navi - Viareggio - (yachts)
- Cantieri Luigi Orlando - Livorno - (tankers, gas tankers)
- Bacini di Carenaggio - Trapani - (floating dock)
- AZIMUT S.p.A. Cantieri Benetti – Viareggio - (yachts)
- EUROPLAN Engineering LTD – Turku – Finland - (passenger ships for Kvaerner Masa Yards)
- AVCO Marine S.a.s. – St. Nazaire – France (n° 12 A.C.Room for Queen Mary 2)
- IMTECH Deutschland GmbH – (A.C.Room for Hull 6155 Marghera)
- IMTECH Deutschland GmbH – (A.C.Room for Hull 6239 Castellammare Na)
- Nobiskrug – (Check of HVAC system for WhitePearl)
- H&H - (Check of HVAC system and acs drawing for Yacht)
- Aerius Marine – (A.C.Room drawing for Hull J34 STX-France)

For the above mentioned shipyards we have carried out classification and workshop drawing for:

- general arrangement plans
- engine arrangement plans
- pipe diagrams for engine & pump room, cargo spaces, accommodations and public areas
- co-ordination plans and mounting plans for engine & pump rooms, cargo spaces, accommodations and public areas
- co-ordination plans and mounting plans of technical spaces (ACR, trunk, el. locker, galley, laundry, pantry and store)
- mooring, cranes, life boat, ladders etc., arrangement plans
- sketch pipes, material list
- duct tagging

Furthermore we have co-operated, giving a part of above stated supports to the following societies:

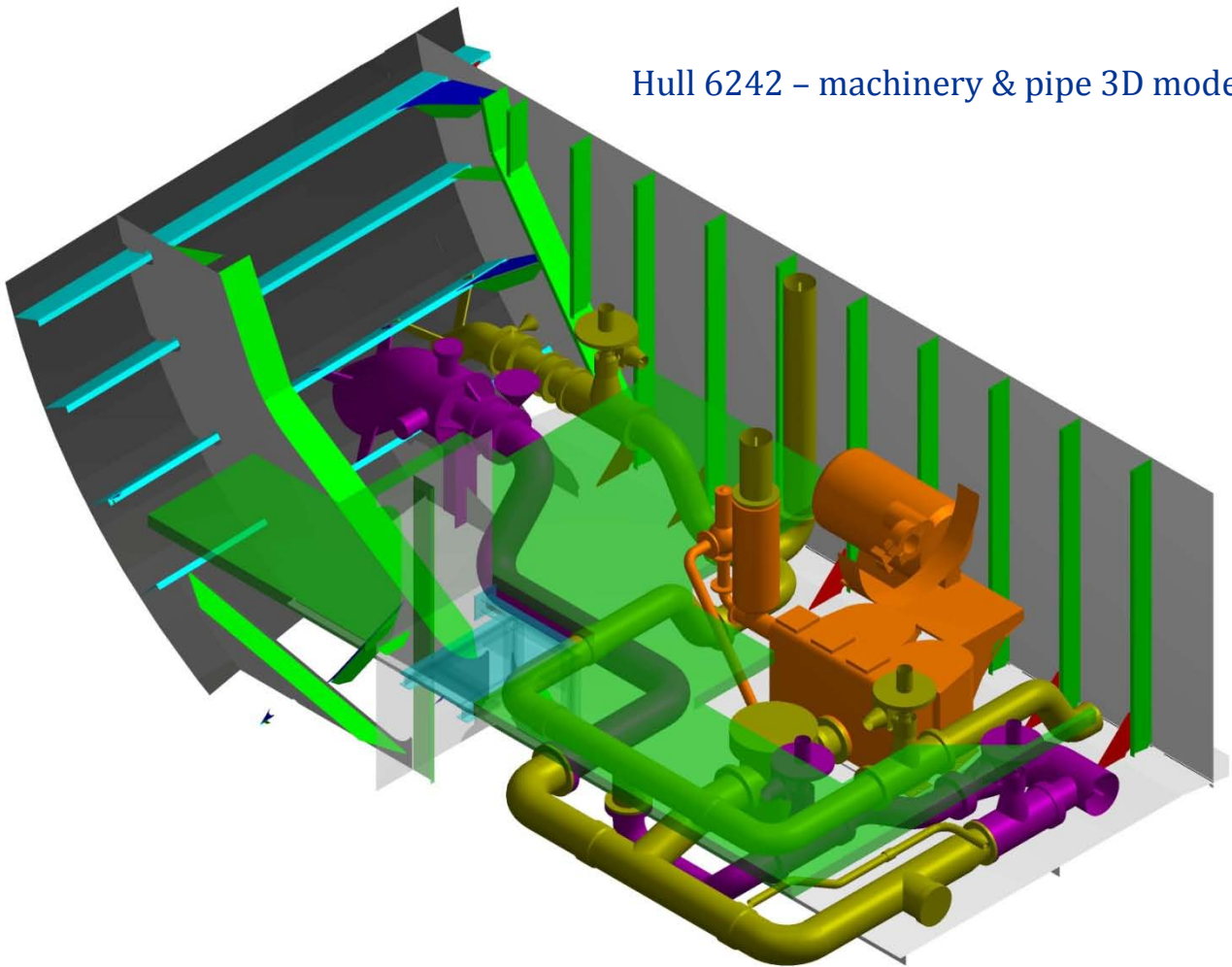
- Navalimpianti - Monfalcone - Gorizia - (plans and constructive drawings for hydraulic hatches, mobile ramps and decks)
- Tecno-Impianti - Udine - (main laundry and laundrettes plans for cargo and passenger ships)
- Danieli S.p.A. - Buttrio - Udine - (plans and drawing for machineries, utensils and plants for rolling- mill industries)
- SimcoVr- drawing for Hvac, pipe, cable and inspection on board for the refitting of Costa Neoromantica
- Simco Vr- study of feasibility for refitting of Costa Atlantica, production of one line diagram for the new Area and material list.
- Fincantieri – in the last 4 years a dedicated work team was formed to develop activities relative to ACR, starting from arrangement to system co-ordination, complete of equipment list for hulls 6241 Holland-6242 Carnival -6250 Regent -6251 Seaburn – 6256 MSC.
- MTH Deutschland GmbH - drawing for Hvac, pipe, cable and inspection on board for fan-room during the refitting of "Island Princess" in cooperation with STX-France.
- inspection of Fire Shut off Dumper on "Empress of The Sea"

We are present also in the "J. Ressel" Corporation, the companies associated can make a completed work for the shipyard.

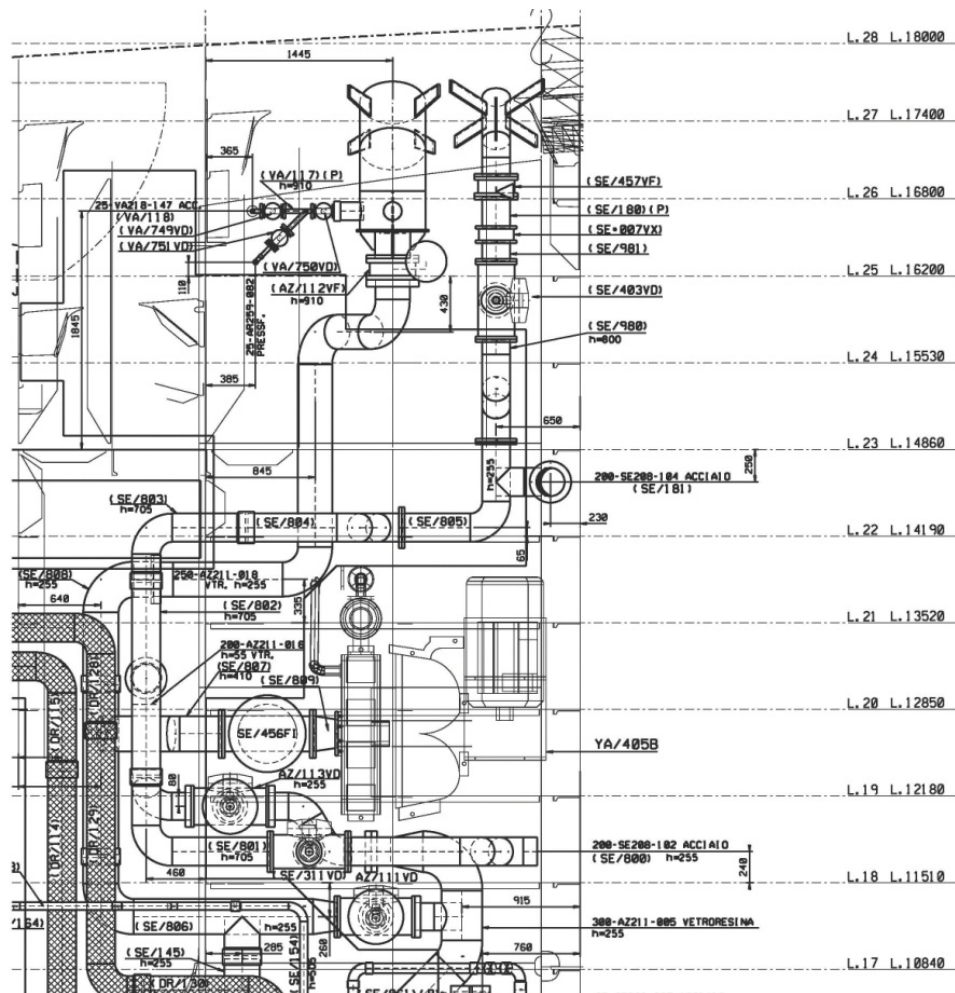
Our company based on a staff of 16 persons with long experience in various industrial fields always present in the office, and ten people that usually work outside, we can develop a total of 3000 working hours per month, ours principal software are Microstation Plant Space and Autocad, but under request we can use also Aveva and other software for Piping/duct/cable.

For any other information you may need, do not hesitate to contact us.

Hull 6242 – machinery & pipe 3D model



Hull 6242 – assembly drawing



WORK ORDER ACTIVITY

Our long experience transmitted to the new generations, grants us the ability to carry out any design work order, from the beginning providing great professionalism for feasibility studies of all ship systems and machinery arrangement. Every starting activity is carried out in cooperation with all involved departments, such as hull, architectural and functional offices, to suggest always the best solution for the following executive design, our excellence.

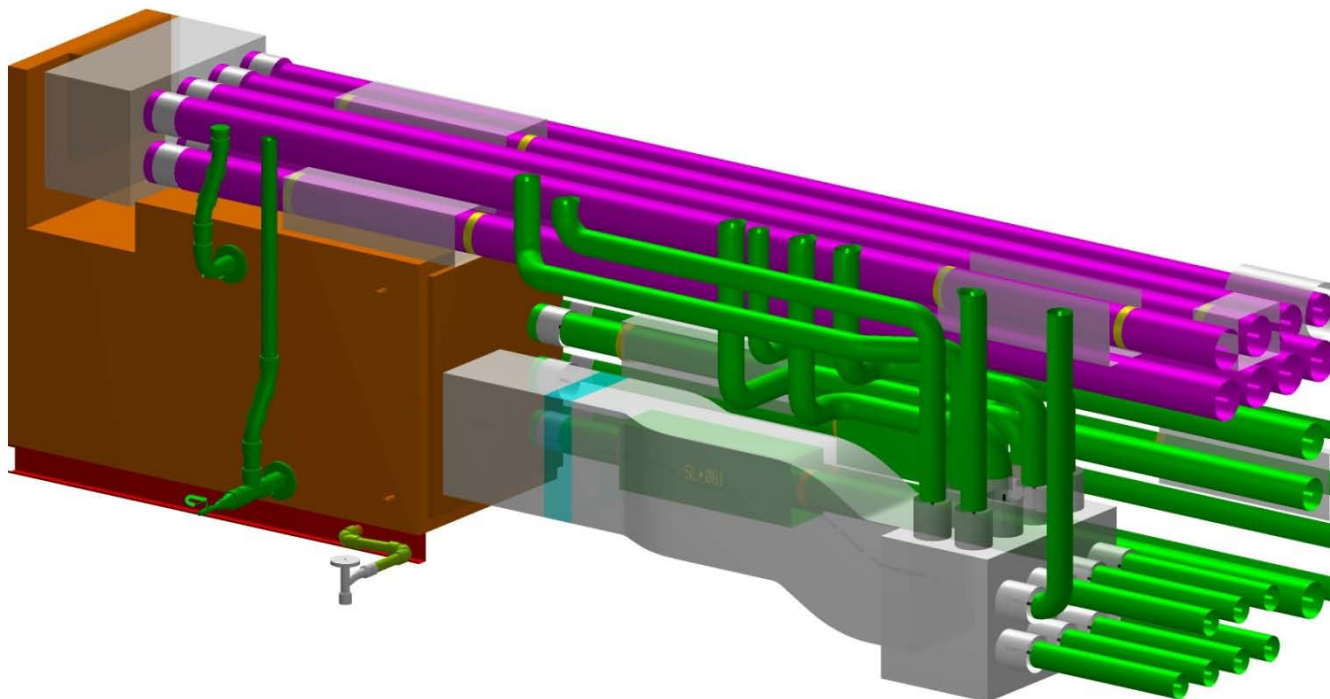
SHIP DESIGN ACTIVITY

Starting from the process-flow/P&I/D&ID we are able to execute functional and topographic diagrams; then, we continue with 3D modeling, pre-coordination, assembly plans, construction details (of pipes, basements, liftings, ducts, etc.) and the relative material/accessories lists necessities for all systems on board assembly.

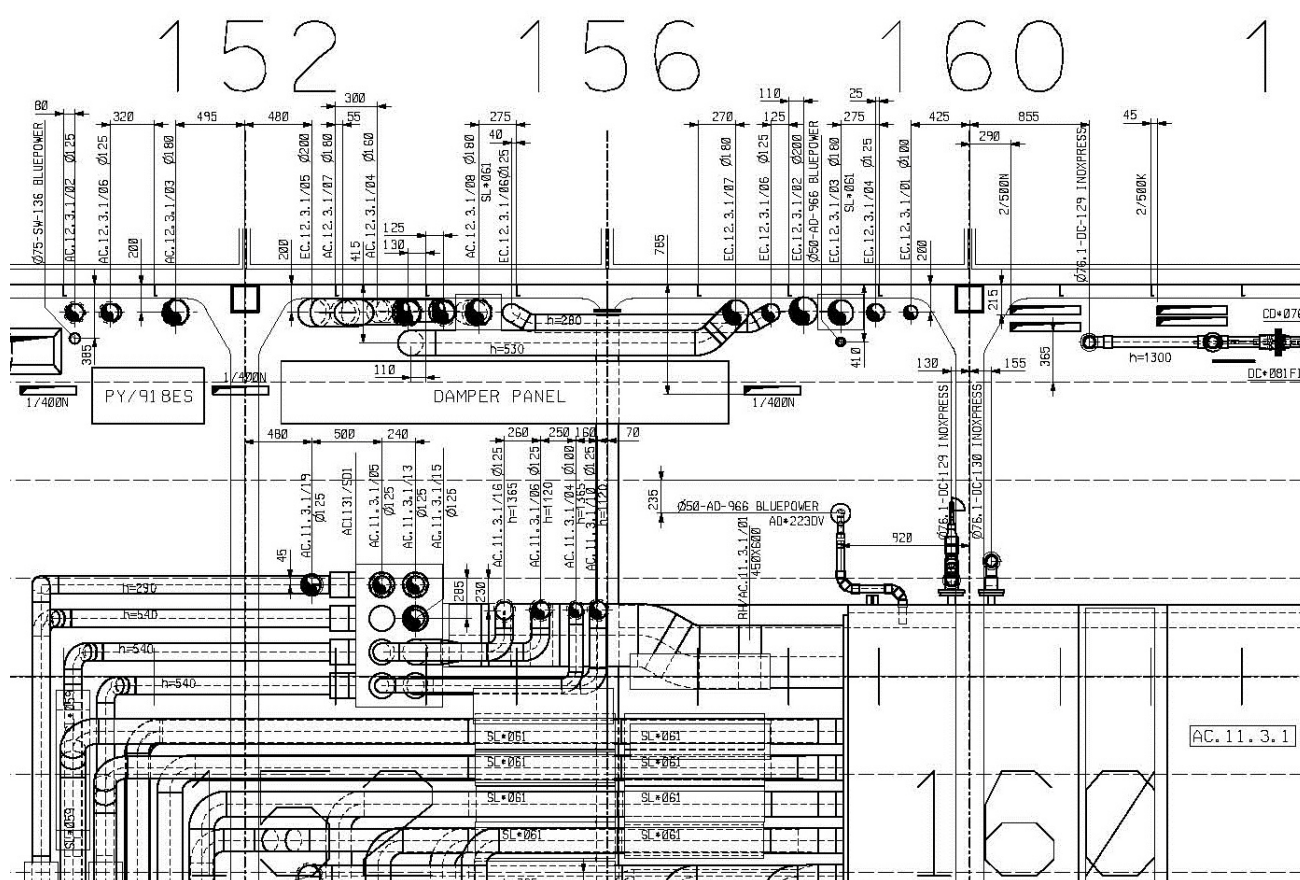
ON SITE SUPPORT ACTIVITY

We can offer operative support on site, both in the shipyard and during navigation, for assembly assistance as foreman for our designed areas, and also for refitting and modifications of existing systems.





Hull 6242 – A.C.Room: AHU & duct 3D model



INTERTECNIC di Sbrizzi U.&C. SAS

Via Torrebianca 39 - 34122 Trieste-Italy

Tel.0039040364920-Fax.00390403726707

C.F. e P. IVA 00183690320 – C.C.I.A.A. 71520 – REG. SOCIETÀ 5951

intertecnic@intertecnic.it - www.intertecnic.com