

Established in 1974

Seriousness and professionalism
are our principles.

The tradition that is renewed in
time.

Guarantee of success, always.



www.intertecnic.com

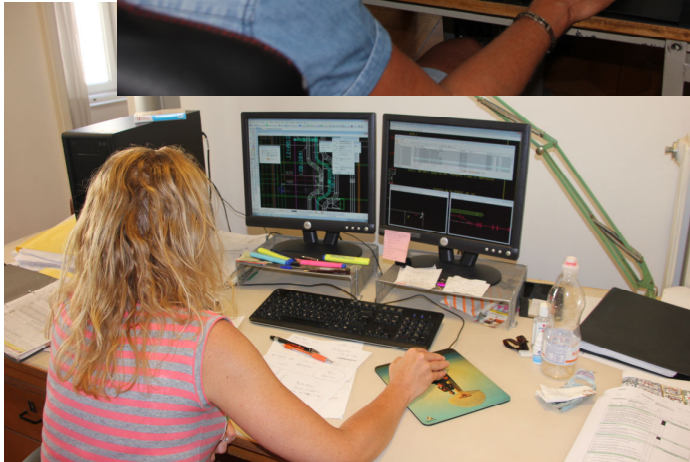
Our staff



The new generation
that has more
than 20 years
of experience.

Our office

Located in the historic city center, in Trieste



Mainly shipbuilding sector and activity :

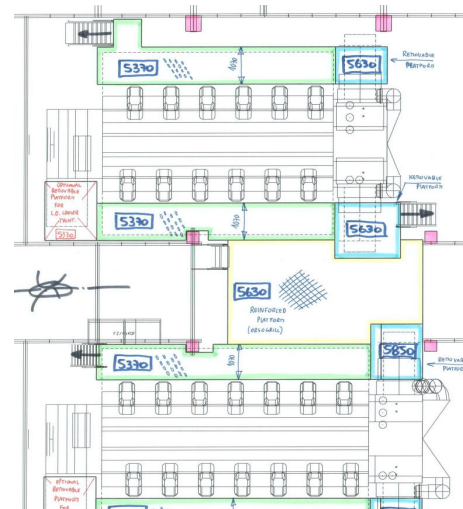
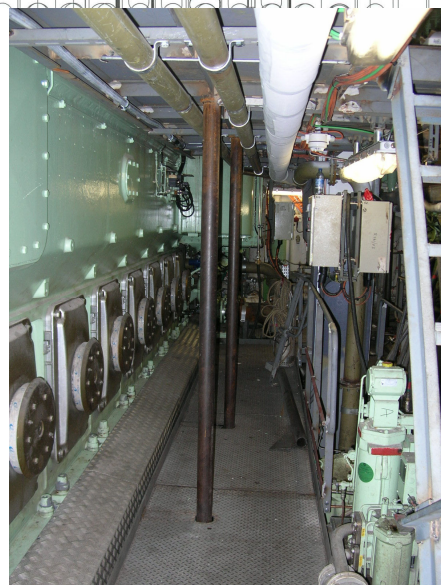
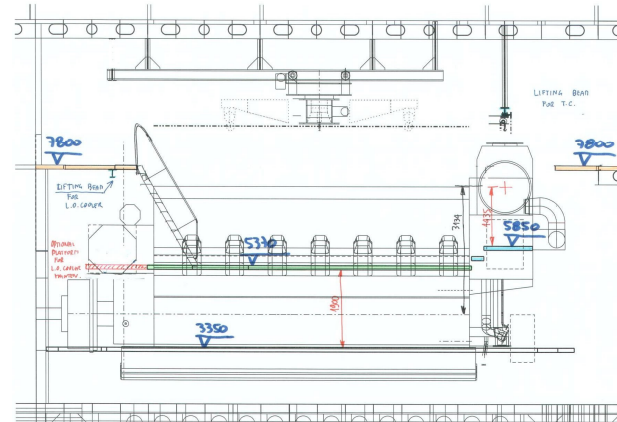
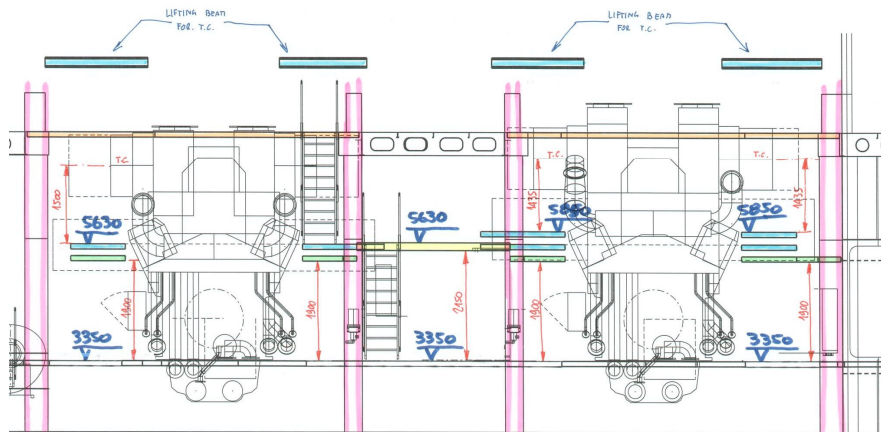


- feasibility studies off all type ship room;
- pre-design coordination and detail design;
- production support on site (first delivery&refitting);
- interaction with shipping company, shipyard and registers;
- disciplines: machinery (engine-pump-PEM-POD-incinerator-evaporator-reverse osmosis-dep.fuel-scrubber), system (fuel&oil-boiler&steam-sewage-HVAC-CO2-electric-water fog fire-chill.water-bilge, freezing, etc.), piping, hull, crane/hoist/lifting, foundation, galley, OLD, interior, cabins, ACR, hotel areas, theater, public areas, wirpool, flooring, hatch, ect...

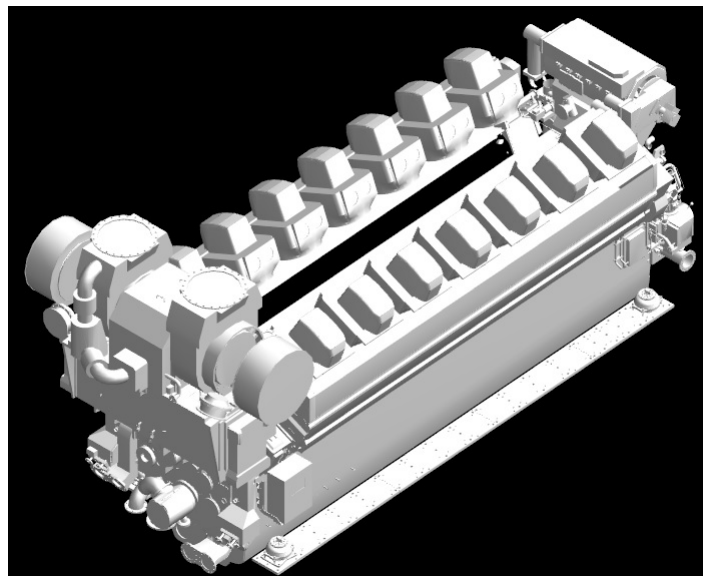
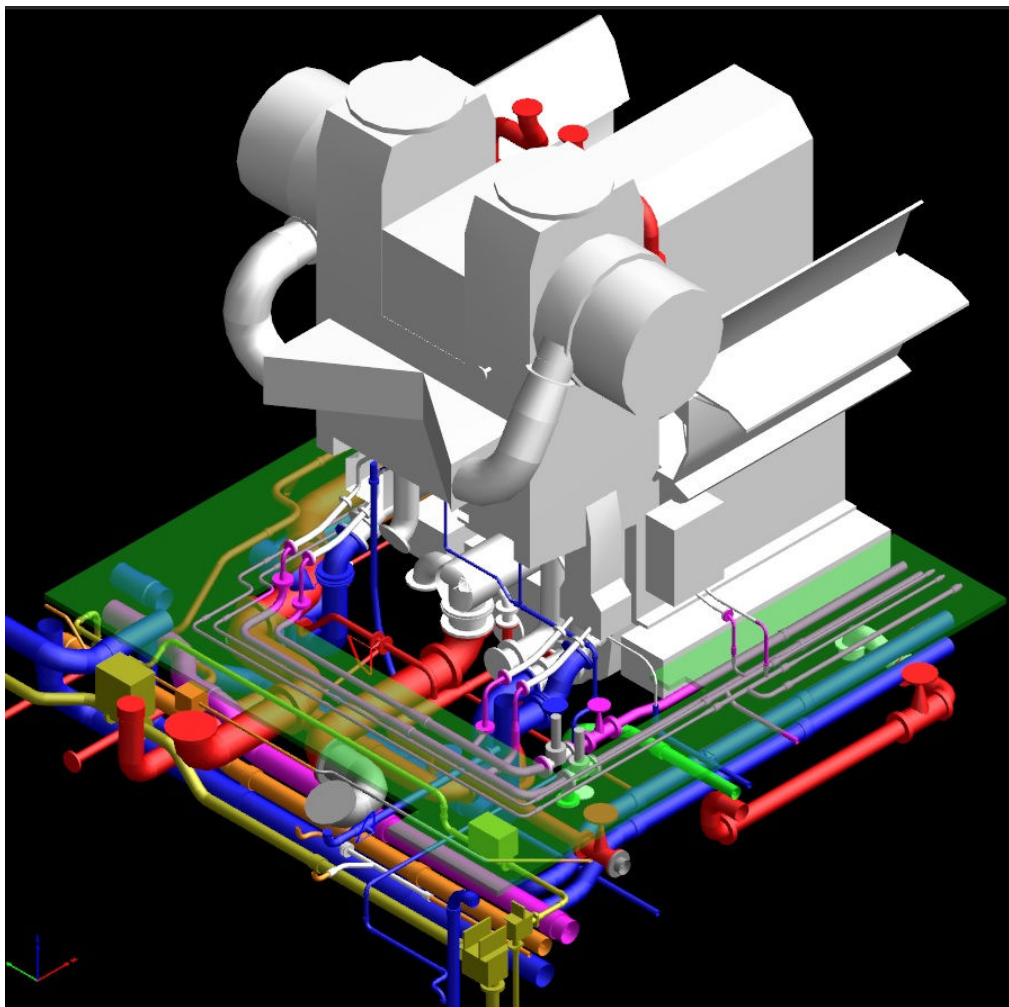
Our target



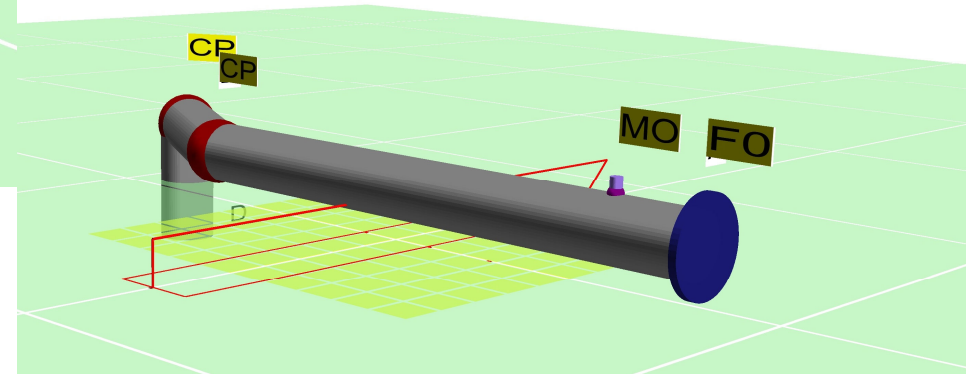
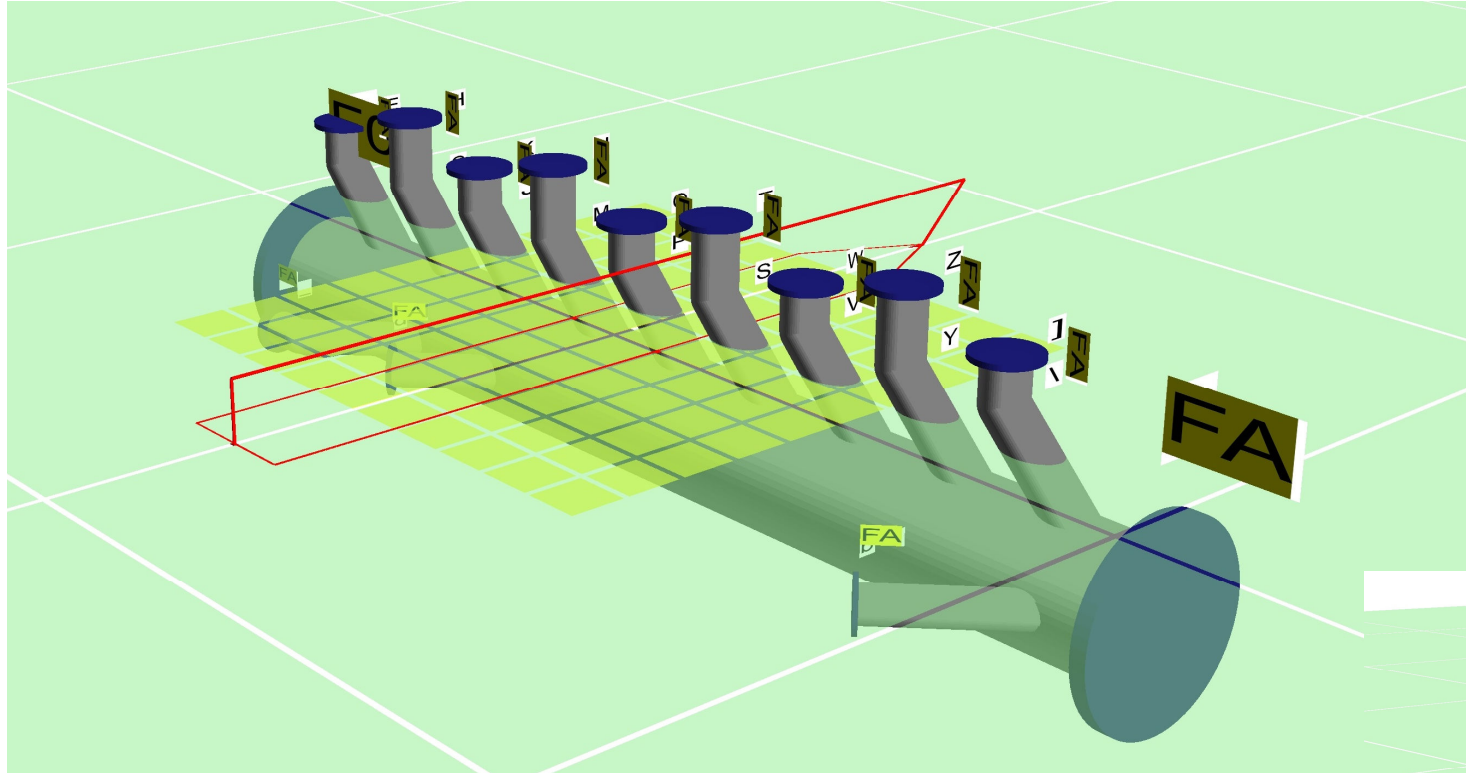




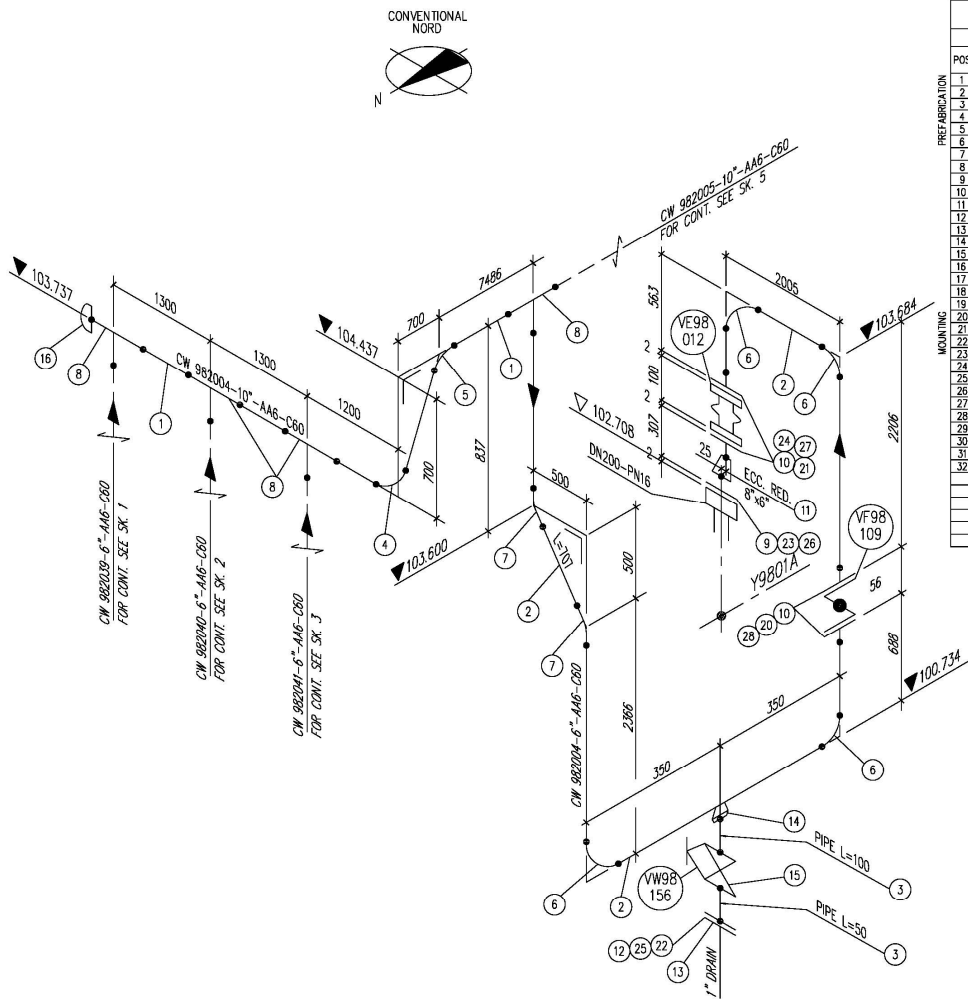
Feasibility study
flooring&grating



Machinery
design: engine
piping connection



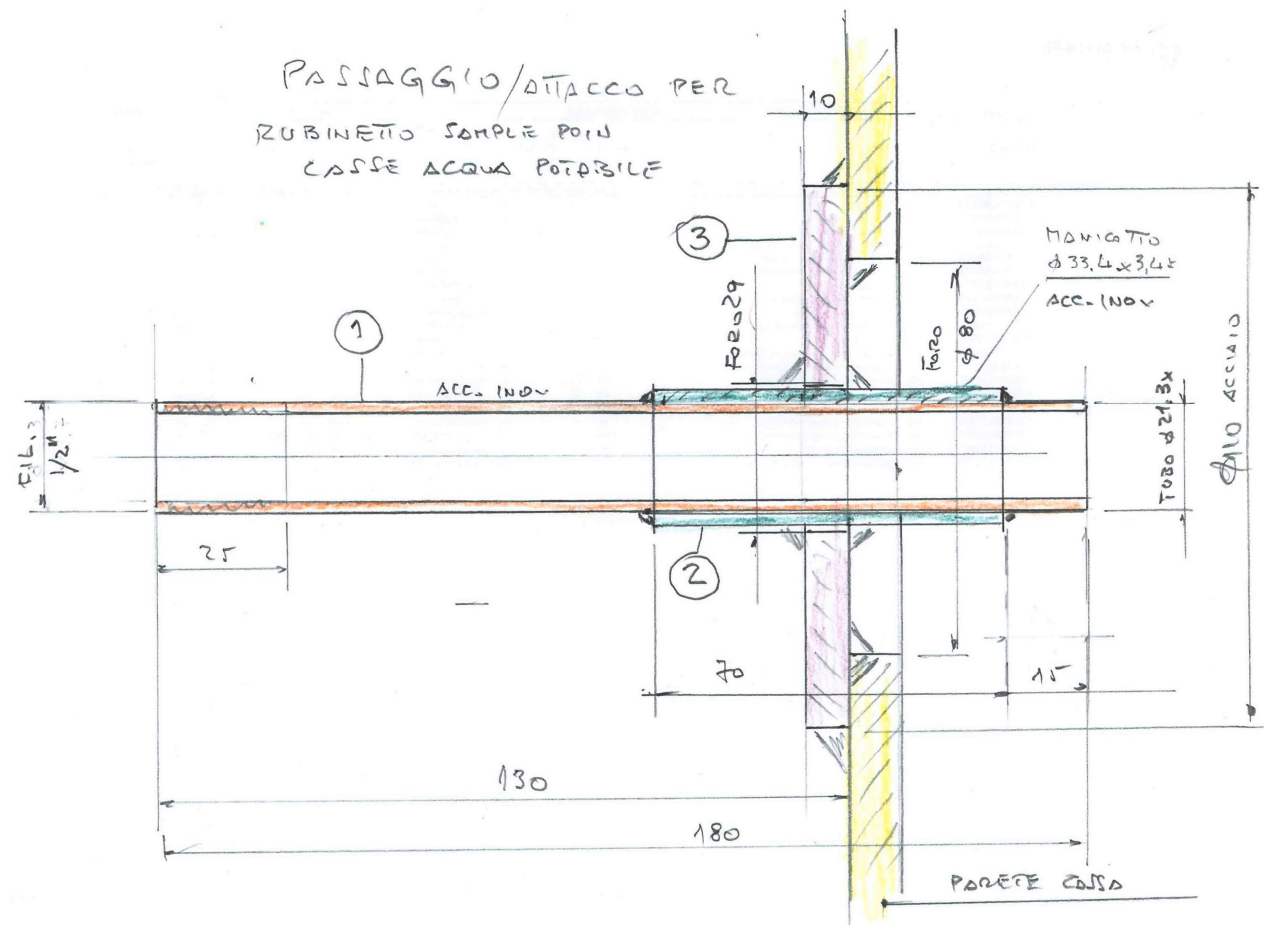
Piping sketch 3D



BILL OF MATERIAL					
TYPE OF MATERIAL					
POS.	SIZE	DESCRIPTION	RATING	MATERIAL	QUANTITY
PREFABRICATION					
1	10"	PIPE THK. 9.27	-	ASTM A106 GR.B-SMLS	10
2	6"	PIPE THK. 7.11	-	ASTM A106 GR.B-SMLS	9
3	1"	PIPE THK. 4.55	-	ASTM A106 GR.B-SMLS	0.15
4	10"	90° LONG RADIUS ELBOW ASME-B16.9	-	ASTM A234 WPB-SMLS	1
5	10"	45° LONG RADIUS ELBOW ASME-B16.9	-	ASTM A234 WPB-SMLS	1
6	6"	90° LONG RADIUS ELBOW ASME-B16.9	-	ASTM A234 WPB-SMLS	4
7	6"	45° LONG RADIUS ELBOW ASME-B16.9	-	ASTM A234 WPB-SMLS	2
8	10"x6"	REDUCTION TEE ASME-B16.9	-	ASTM A234 WPB-SMLS	4
9	DN200	WN FLANGE UNI 2282-67	PN16 RF	ASTM A105	1
10	6"	WN FLANGE ASME-B16.5	150# RF	ASTM A105	4
11	8"x6"	ECCENTRIC REDUCTION ASME-B16.9	-	ASTM A234 WPB-SMLS	1
12	1"	SW FLANGE ASME-B16.5	150# RF	ASTM A105	1
13	1"	BLIND FLANGE ASME-B16.5	150# RF	ASTM A105	1
14	1"	SOCKLELET SW END-TB RAC 5380	3000#	ASTM A105	1
15	1"	CARBON STEEL-GATE-BB-Red-B-Solid wdg-Exp.seal-AP602	8000# SW	ASTM A105	1
16	10"	CAP ASME-B16.9	-	ASTM A234 WPB-SMLS	1
MOUNTING					
17					
18					
19					
20	6"	BUTTERFLY LUG WAFFER-SLEEVE VALVE	150# RF	ASTM A216 WCB	1
21	6"	EXPANSION JOINT ALFLEX RU-GS WITH TB RODS CR-5	150# RF	RUBIFLEX (RUBBER)	1
22	1/2"x70	ST. BOLT+2 NUTS ANSI Thdd-TB BUL 5368	-	ASTM A193 B7/A194 GR.2H	4
23	DN200	SP. WOUND GASKET WITH OUT& INN. RINGS-TB QUA 5365	-	316SS+GRAPH. 98% C.S.OUT.RING	1
24	6"	SP. WOUND GASKET WITH OUT& INN. RINGS-TB QUA 5365	-	316SS+GRAPH. 98% C.S.OUT.RING	2
25	1"	SP. WOUND GASKET WITH OUT& INN. RINGS-TB QUA 5365	-	316SS+GRAPH. 98% C.S.OUT.RING	1
26	M20x80	BOLT+1 NUT	-	ASTM A193 B7/A194 GR.2H	12
27	3/4"x10	ST. BOLT+2 NUTS ANSI Thdd-TB BUL 5368	-	ASTM A193 B7/A194 GR.2H	16
28	3/4"x50	SCREW ANSI Thdd-TB BUL 5368	-	ASTM A193 B7/A194 GR.2H	16
29					
30					
31					
32					



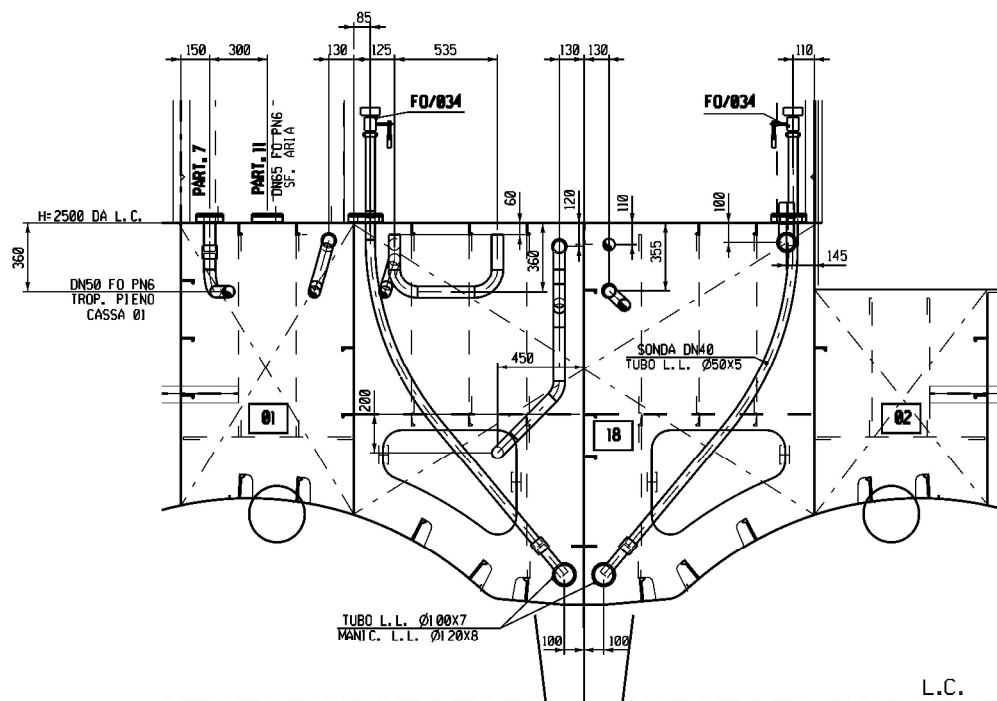
Piping line
isometric drawing



Detail design

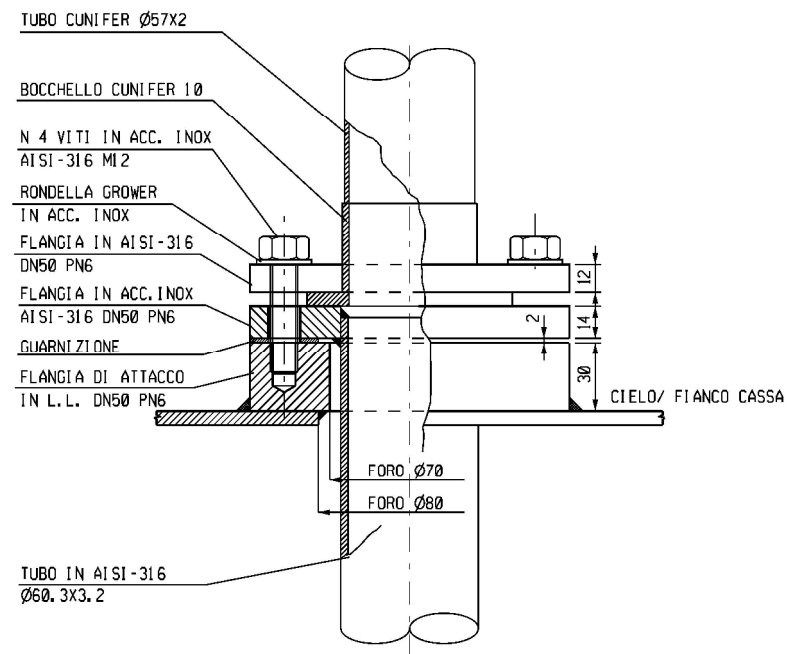
SEZ. TRASV. ORD. 5

VERSO PRORA

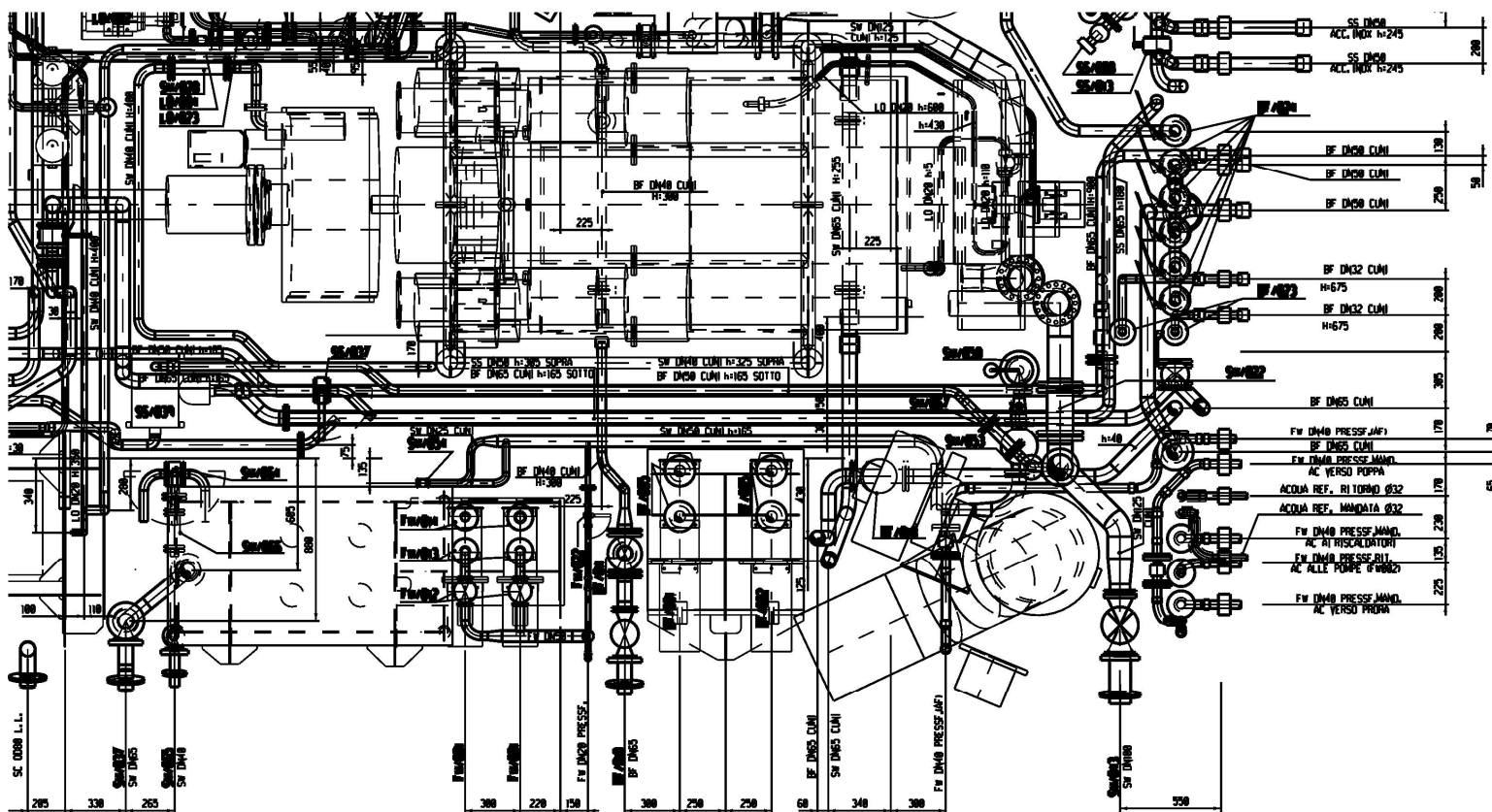


PART. 6

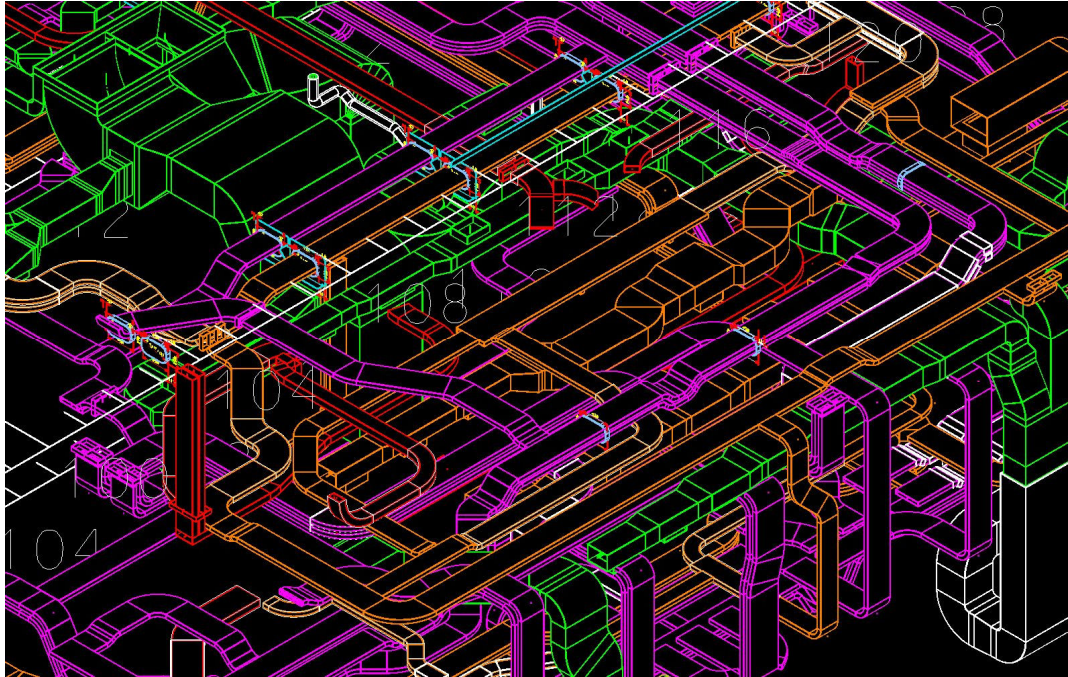
SCALA 1:2.5



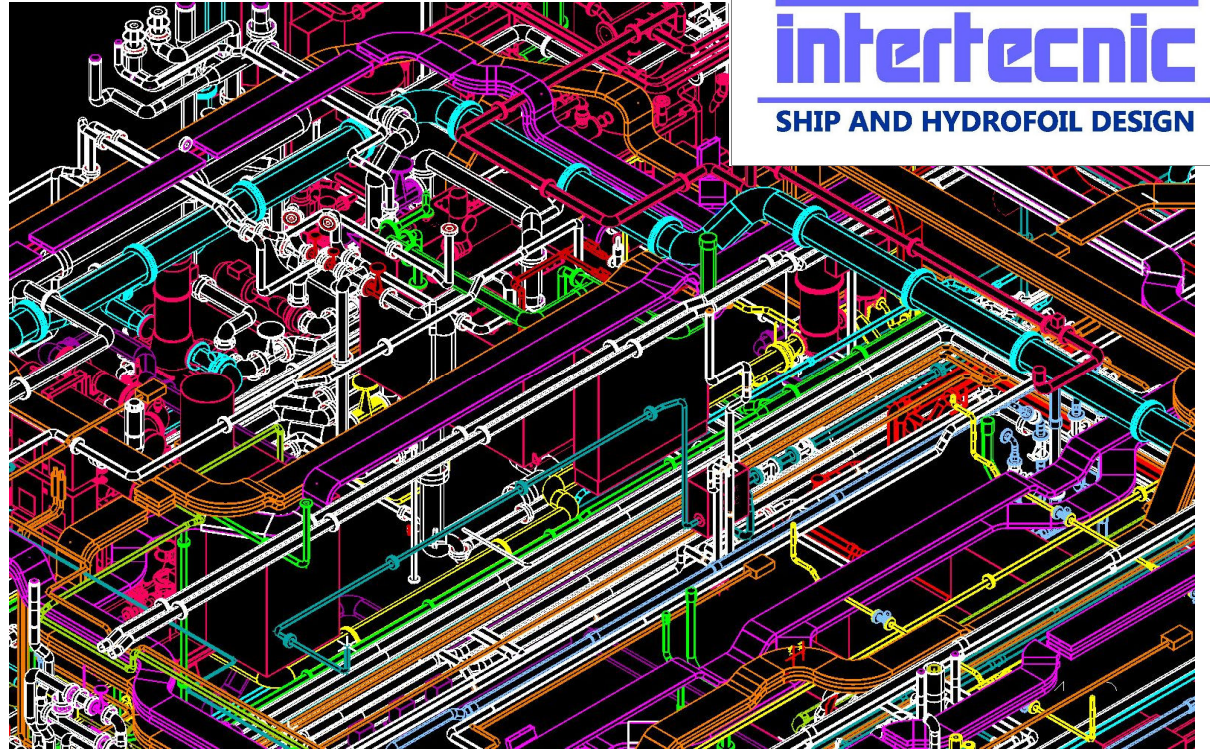
Yachts design



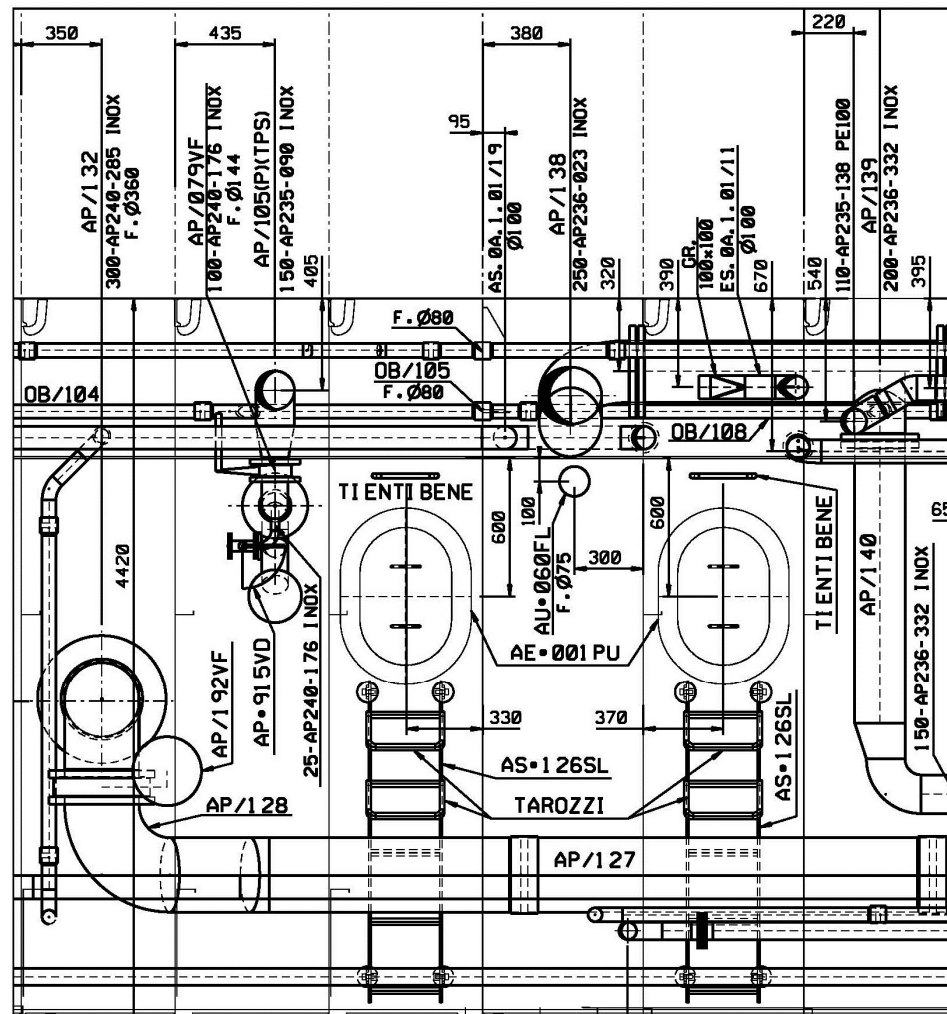
Yachts design



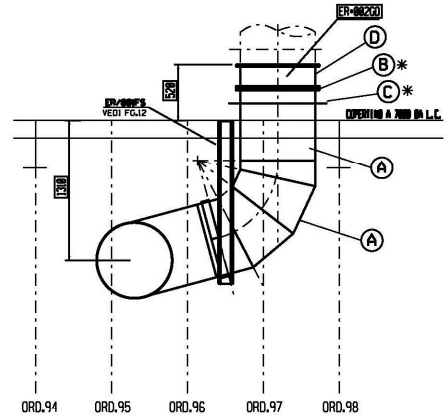
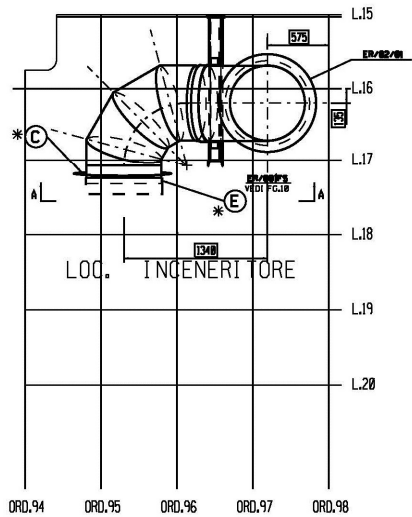
Systems
design



Tank arrangement



PIANTA COPERTINO A 7000 DA L.C.

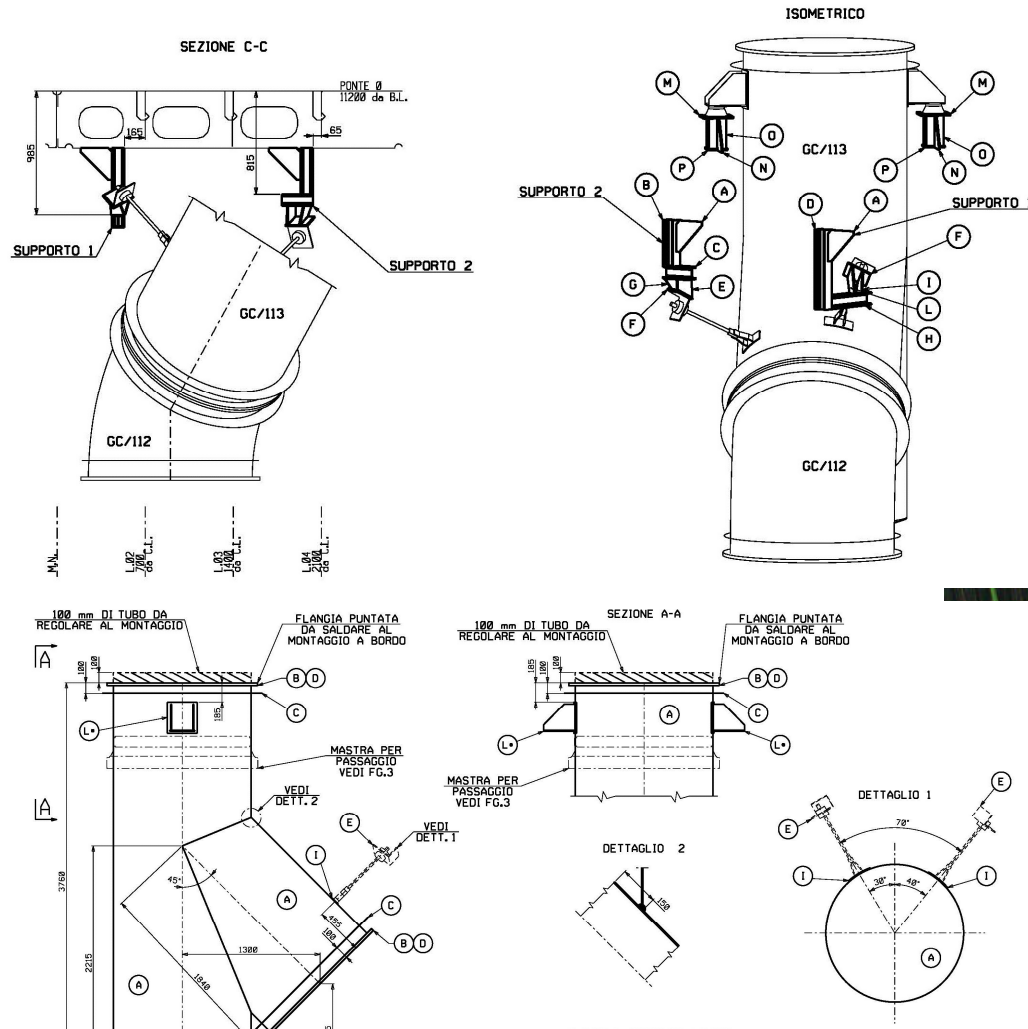


* SILDARE AL MONTAGGIO A BORDO
 △ AGGIUNTA PER ADATTARE AL MONTAGGIO A BORDO

COMP.	DESCRIZIONE COMPONENTI	NRL.	
A	TUBO Ø est. 700 Fe 42 B FN UNI 7070	1	
B	FLANGIA DN 700 Fe 42 B FN UNI 7070 NRB67001	2	
C	RICHETTA DI CONTENIMENTO ISOLAZIONE - VEDI FOGLIO N.01	2	NOTE
D	GIUNTO DI ESPANSIONE A SOFFIETTO NRB67612	1	
E	TUBO Ø est. 712 Fe 42 B FN UNI 7070	1	
			305 Kg



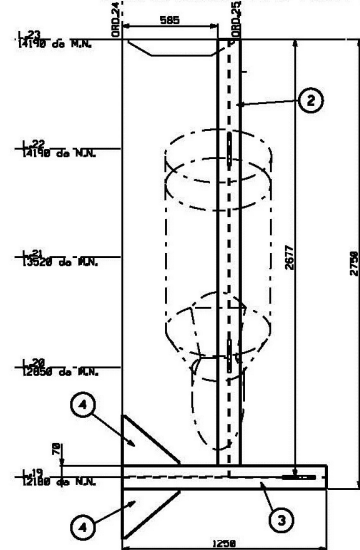
Piping design: exhaust gas



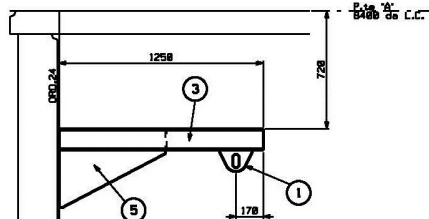
Piping design:
supports for
exhaust gas

Lifting design

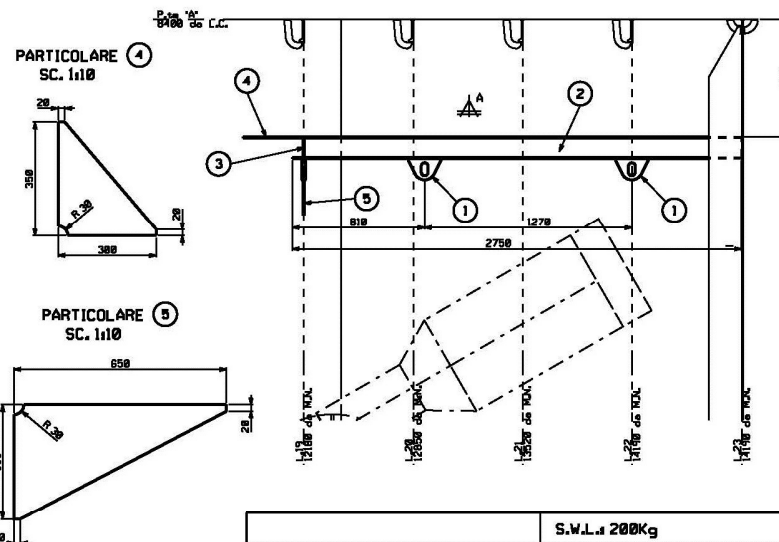
VISTA IN PIANTA SOTTO PONTE "A" S.N.



VISTA LONGITUDINALE DA M.N. A 12180 S.N.



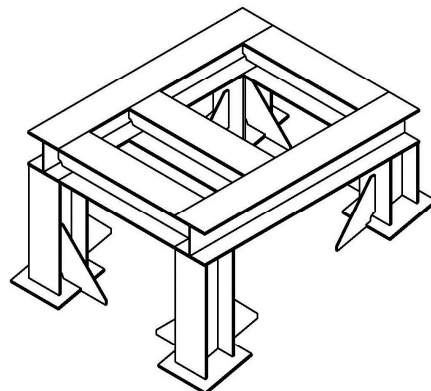
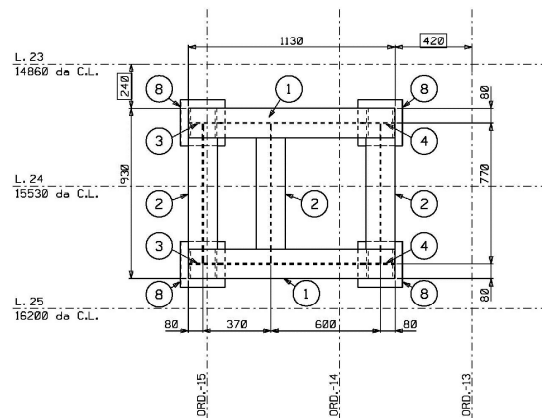
VISTA TRASVERSALE DA PRORA ORD.24 S.N.



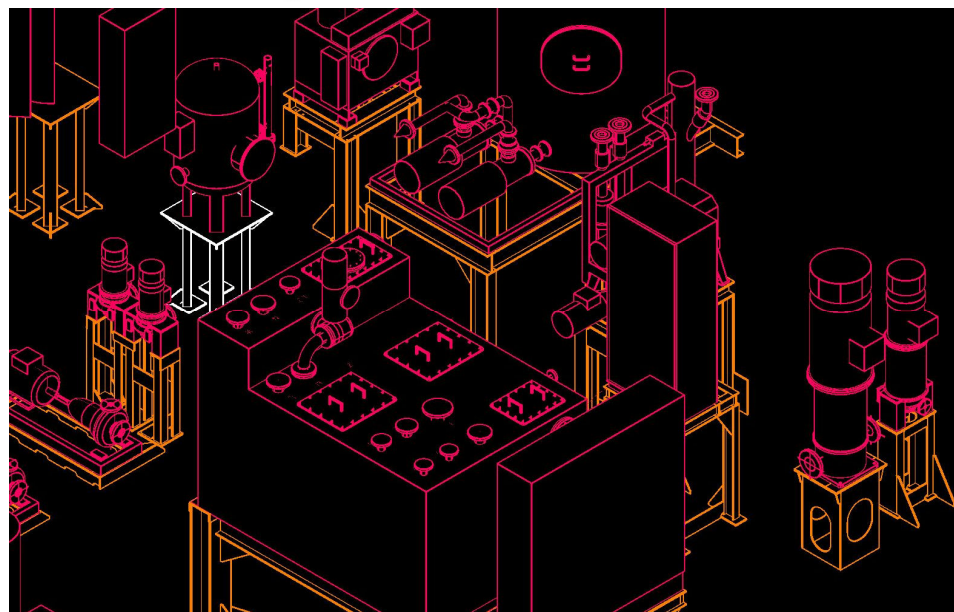
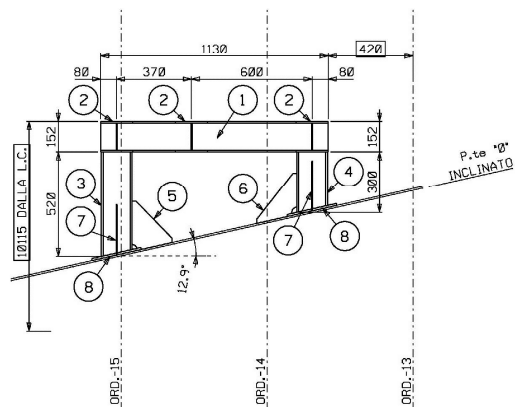
S.W.L. 200Kg				
MACCHINARIO: COMPONENTE DA MOVIMENTARE, COMPONENTI VARI				
POS.	COMPONENTE	DIMENSIONE	MATERIALE	PZ. PESO UNIT.
1	GOLFARE da 1,5t	200x130x12	Vedi foglio 1	3 1,8kg
2	TRAVE	HE 140A L-2675	Vedi foglio 1	1 65,9kg
3	TRAVE	HE 140A L-1258	Vedi foglio 1	1 38,8kg
4	SQUADRA	380x350x5	Vedi foglio 1	2 4,9kg
5	SQUADRA	650x350x5	Vedi foglio 1	1 18,7kg
PESO TOTALE 122,6kg				



VISTA IN PIANTA
PONTE '0' D.N.

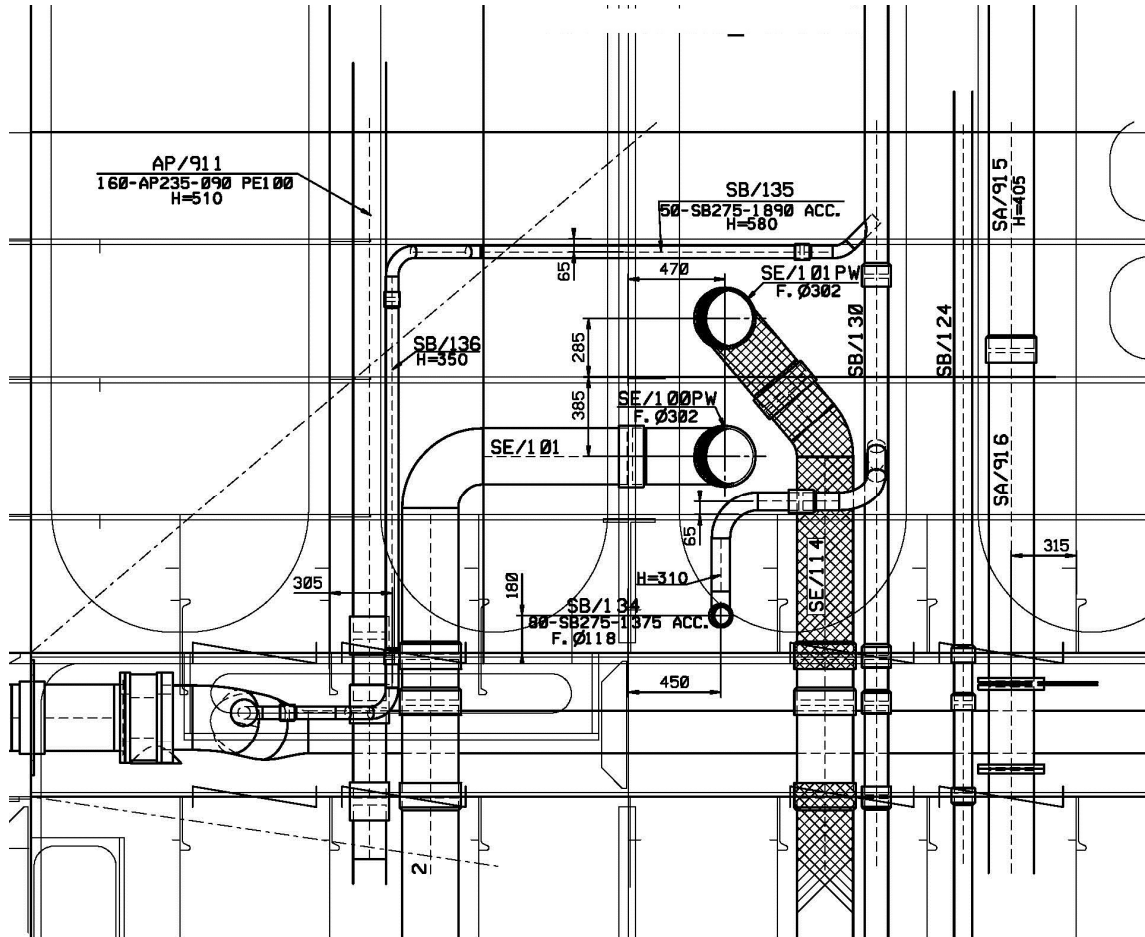


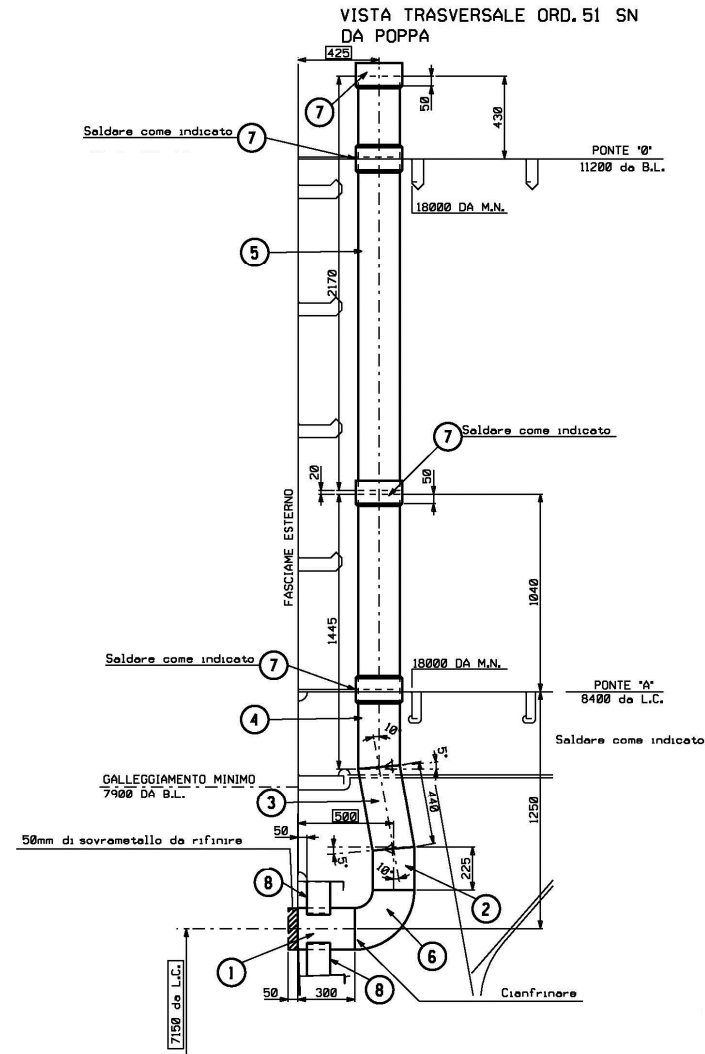
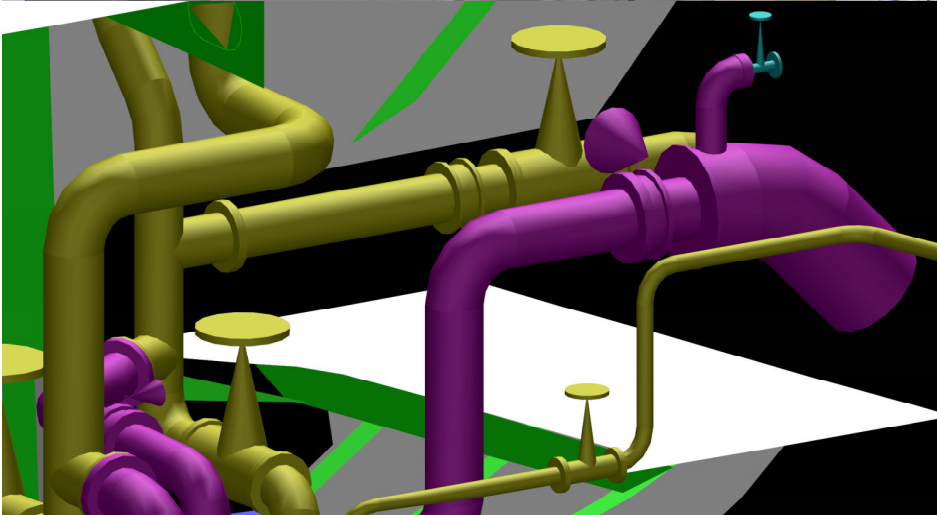
VISTA LONGITUDINALE DA L.24-L.25
VISTA DA FASCIAME



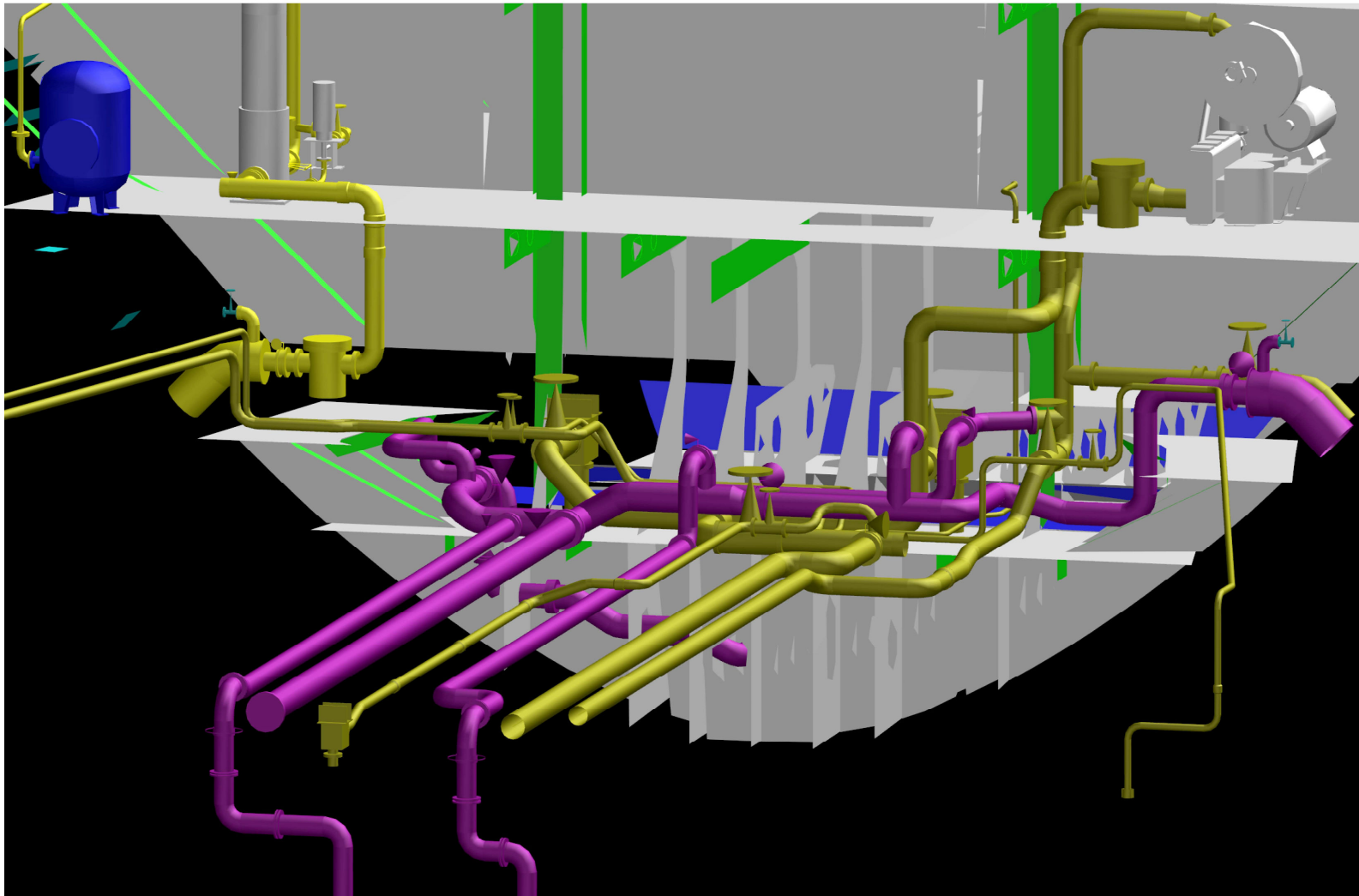
Foundation design

Piping design

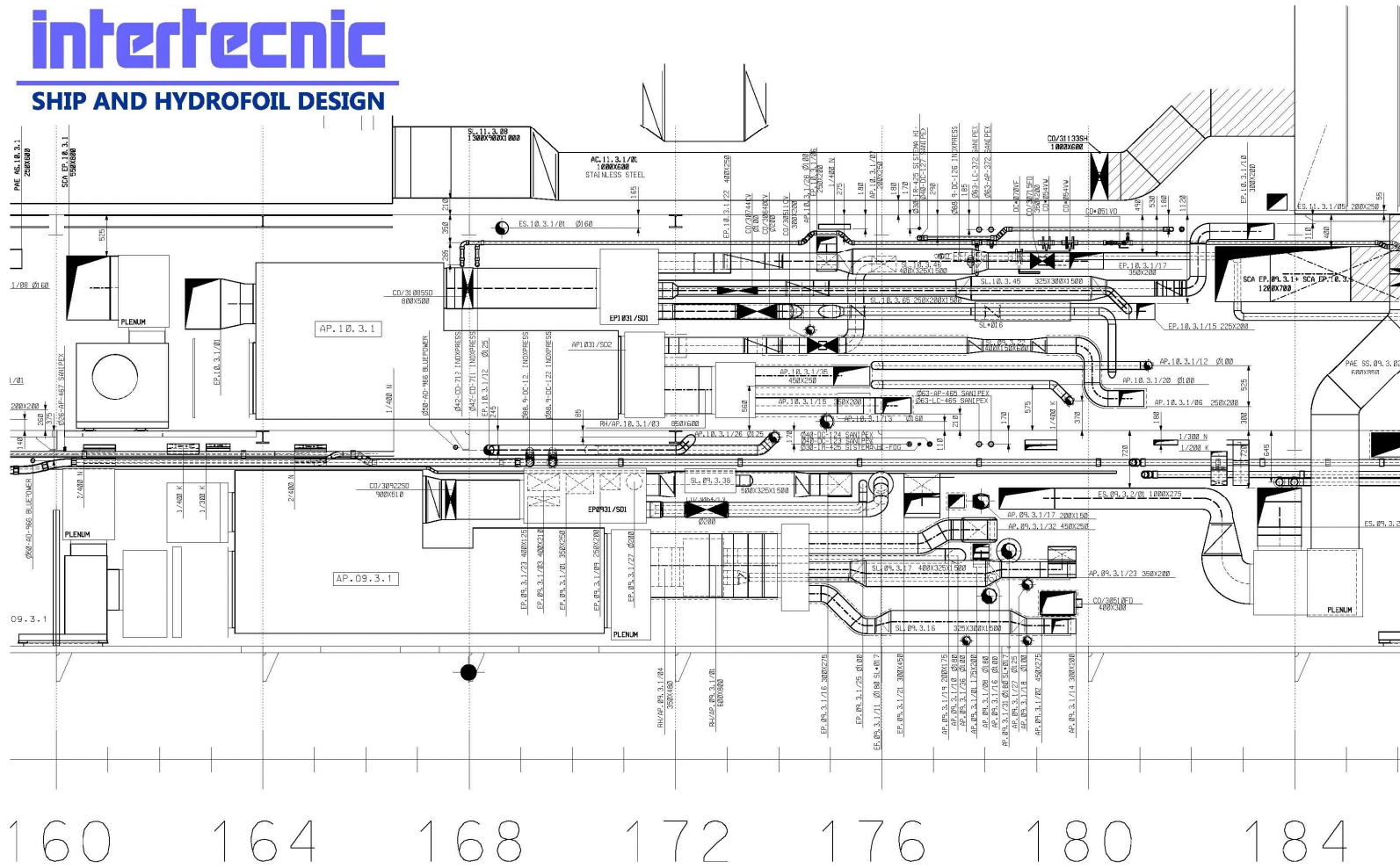


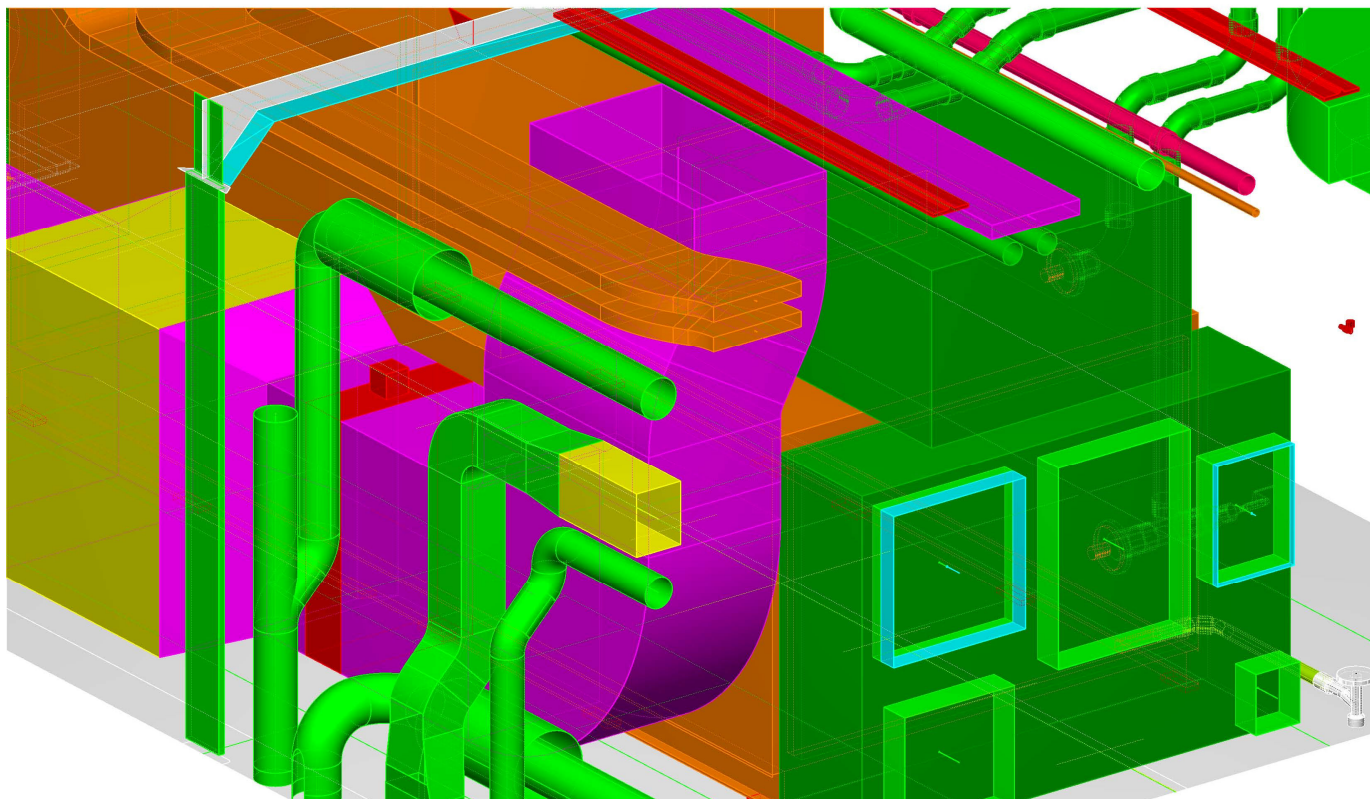


Piping design:
overboard
discharge

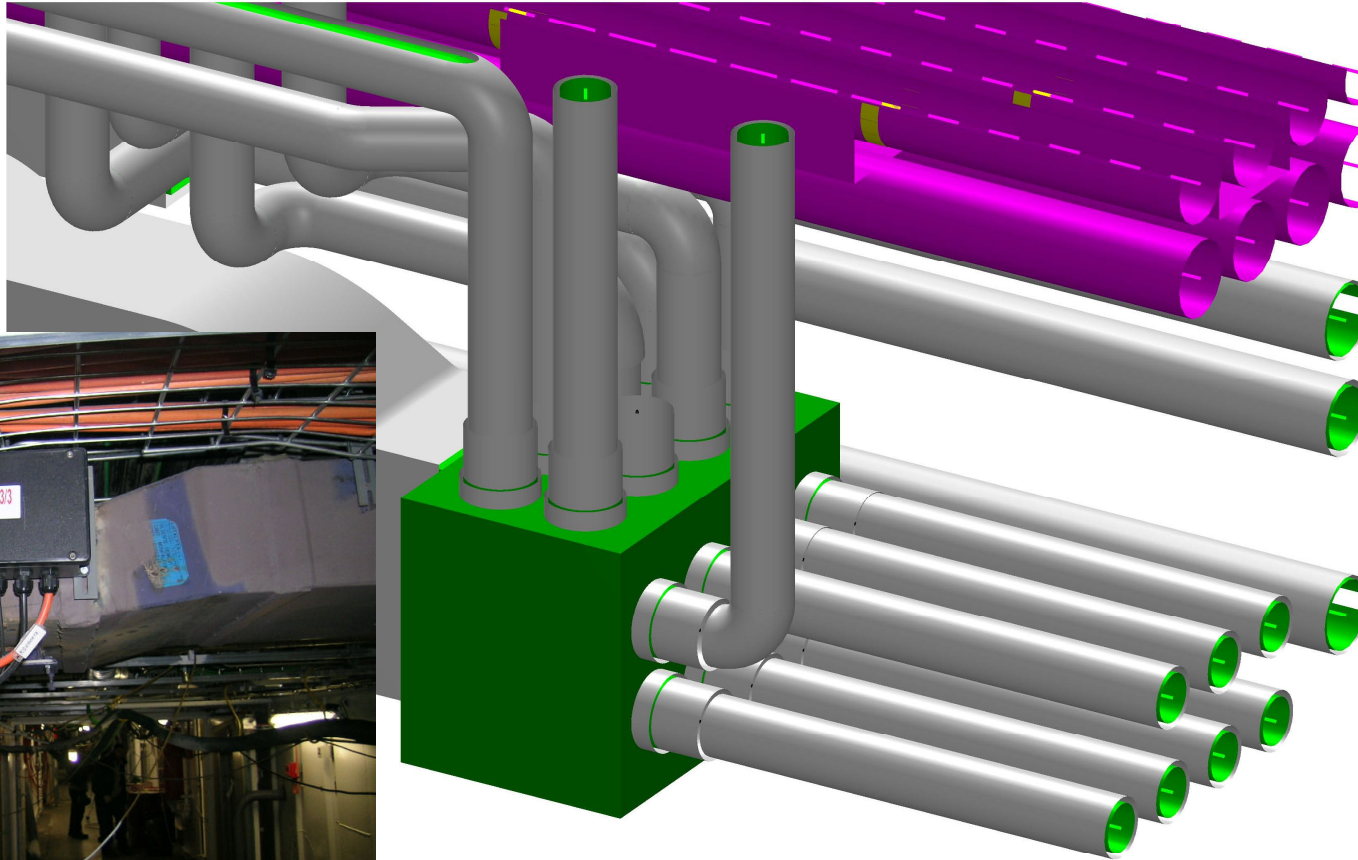


Piping design:
bilge system

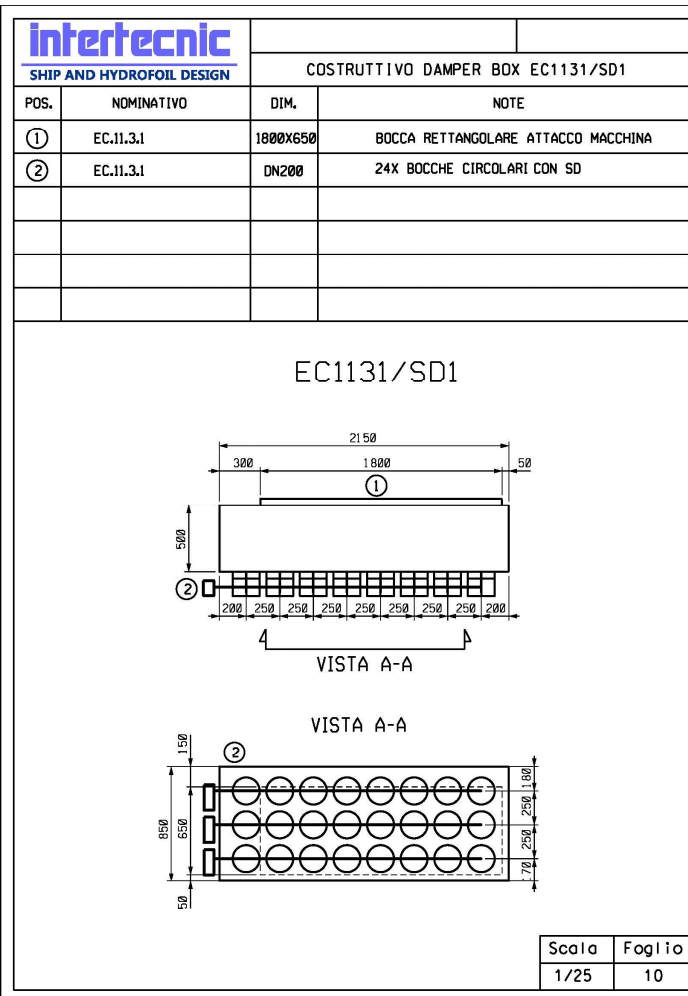
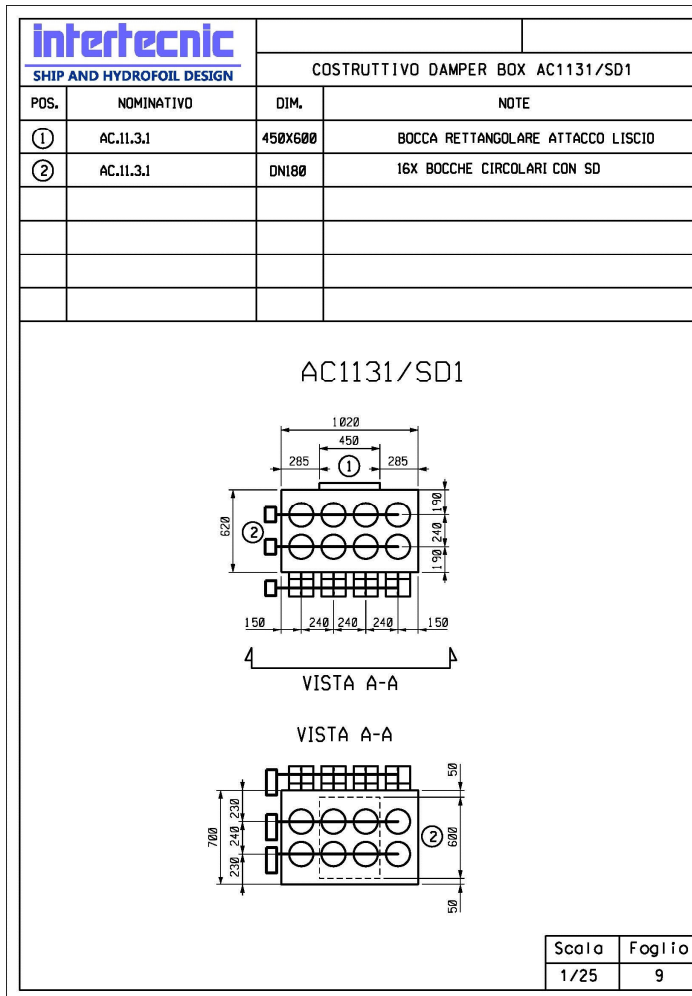




HVAC
design



HVAC
design



HVAC
constructive
design

HVAC final product



Our pride



www.intertecnic.com